

# Season's greetings from Collas Crill

## December 2025

As always, the end of a year is a time to pause and take stock. 2025 has been another busy year for Collas Crill and there have been some notable highlights through the year.

In November [the firm added Bermuda to its network of offices](#) to meet growing client demand and expand the reach of its services. Its now-60-strong Cayman team marked [Collas Crill's tenth anniversary on the island](#) and [Collas Crill Trust Jersey marked a very successful first year](#) in business, receiving an incredibly positive response from the market since its inception last September.

The inter-school Moot competition has once again been in full swing across Guernsey, Jersey and Cayman. Since running the first competition in Guernsey 18 years ago, Collas Crill has Moot alumni scattered across the world and, as a firm, is proud to have played a small part in their early development.

Collas Crill's CSR support in 2025 has included sponsorship of [weekly football training for children with disabilities](#), sponsorship of a [Book Week](#) to help inspire a love of reading among school children and a [partnership with a local charity set up for and by people with experience of care](#). The firm also continued to support [breast cancer awareness](#) in Cayman with Pilates for Pink and Monte Carlo Night in support of breast cancer awareness.

To further this support, in lieu of client gifting Collas Crill is donating much-needed funds to four staff-nominated charities for whom the office teams have been fundraising throughout 2025 – Healing Waves in Jersey, Autism Guernsey, Meals on Wheels in Cayman and Breast Friends in the BVI.

The team at Collas Crill would like to say a heartfelt thank you to its clients for their continued business and trust in the firm.

Wishing you much happiness and success in 2026.



**SEASON'S GREETINGS**  
*from the team at Collas Crill*



For more information please contact:

**Jason Romer**

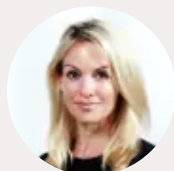
Group Managing Partner // Jersey

**t:**+44 (0) 1534 601696 // **e:**jason.romer@collascrill.com

**Lilla Zuill**

Managing Partner // Bermuda

**t:**+1 441 405 1500 // **e:**lilla.zuill@collascrill.com

**Ellie Crespi**

Managing Partner // BVI

**t:**+1 284 852 6335 // **e:**ellie.crespi@collascrill.com

**Gina Berry**

Managing Partner // Cayman

**t:**+1 345 914 9654 // **e:**gina.berry@collascrill.com

**Gareth Bell**

Managing Partner // Guernsey

**t:**+44 (0) 1481 734214 // **e:**gareth.bell@collascrill.com

**Pamela Doherty**

Managing Partner // Jersey

**t:**+44 (0) 1534 601655 // **e:**pamela.doherty@collascrill.com