

Collas Crill to offer global regulatory and compliance service

January 2026

Collas Crill now offers a global regulatory and compliance service.

Collas Crill launched its specialist governance, risk and compliance (GRC) consultancy service in Guernsey in late 2019, in recognition of the need for broader GRC support to complement the work of its market-leading risk and regulatory legal team, in addition to providing compliance outsourcing roles.

Following six years of continued growth in Guernsey, Collas Crill's [Regulatory and Compliance](#) team now has a physical presence to match the group's wider geographical reach. It offers regulatory advisory services across its home jurisdictions, whilst continuing the provision of outsourced prescribed person roles in Guernsey.

Collas Crill group has recently appointed [Alex Ruddy](#), based in Jersey, as Group Managing Director to head up its Regulatory and Compliance team across the jurisdictions.

Alex is a Chartered Accountant, spending ten years of her career with 'big four' accountancy firms, and more latterly nine years as co-founder and director of a Jersey based regulatory consultancy. Alex is also the Chair of the Institute of Directors Jersey branch.

During her career she has assisted financial services businesses in developing bespoke solutions to regulatory issues, working closely with board members and key persons. Alex has been appointed to the role of Reporting Professional, Inspector and Skilled Person in both Jersey and Guernsey.

She also has extensive experience in AML/CFT/CPF and sanctions issues, policies and procedures, fraud and asset tracing.

Alex is supported in Guernsey, specifically, by Executive Director [Keith McAndrew](#), and a team of regulatory and compliance specialists across the wider group.

Collas Crill has real strength and depth in its understanding of the regulatory regimes surrounding financial services businesses, both in its home jurisdictions and further abroad.

In addition to customised GRC services, the team has considerable experience in due diligence for M&A activity or as part of an independent regulatory health-check.

On joining Collas Crill Alex said: 'Collas Crill's international platform and commitment to best-in-class governance make it an exciting place to lead a regulatory and compliance team. I am looking forward to working across jurisdictions to ensure a consistent, robust approach that supports both client service and strategic ambition.'

[Wayne Atkinson](#), Partner at Collas Crill, said: 'In today's rapidly evolving business landscape, we understand that good corporate governance, proactive risk management, and compliance with relevant laws and regulations is paramount for establishing a resilient business model.'

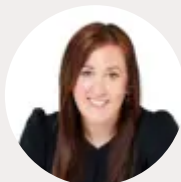
[Regulatory](#) | [Real estate](#) | [Private client and trusts](#) | [Insolvency and restructuring](#) | [Dispute resolution](#) | [Corporate](#) | [Banking and finance](#)

This note is a summary of the subject and is provided for information only. It does not purport to give specific legal advice, and before acting, further advice should always be sought. Whilst every care has been taken in producing this note neither the author nor Collas Crill shall be liable for any errors, misprint or misinterpretation of any of the matters set out in it. All copyright in this material belongs to Collas Crill.

'Alex is well versed in helping businesses strengthen their governance frameworks and control environments, taking a pragmatic approach to corporate governance matters. Having Alex at the helm of our service strengthens our ability to help clients navigate regulatory complexities, allowing them to fully focus on the growth and success of their business.'

To find out more about our Regulatory and Compliance service click [here](#).

For more information please contact:

**Alexandra Ruddy**

Group Managing Director // Jersey

t:+44 (0) 1534 601614 // **e:**alexandra.ruddy@collascrill.com

**Wayne Atkinson**

Partner // Guernsey

t:+44 (0) 1481 734225 // **e:**wayne.atkinson@collascrill.com

**Keith McAndrew**

Executive Director // Guernsey

t:+44 (0) 1481 734843 // **e:**keith.mcandrew@collascrill.com